

v 1.0c



NRC

Namdal Ressurs
Connect

WASTE CONTAINER ACCESS CONTROLLER

ABOUT US

NAMDAL RESSURS AS



Namdal Ressurs AS was established in 1991, and has since then supplied equipment and other consumables to the waste industry in Norway. We are certified according to the NS-EN ISO 9001 and 14001 standards.

We have worked with sensory technology and electronic control of our solutions since 2014.

In 2019 we established a subsidiary in Sweden, Namdal AB. In 2021 we established our own service company named Eco Service, and in 2021 we strengthened our position in the technology development and bought Fielddata AS, a tech-company based in Trondheim.

CPS Consulting



CPS Consulting is an embedded technology company that combine the latest hardware and software technologies to create advanced connected products for its customers.

Focused on understanding the customers needs they propose and define solutions. They are embedded experts with deep knowledge of modern web technologies, and develop both hardware an software, and help manage both teams and projects.

NORBIT



NORBIT is a global provider of tailored technology to carefully selected niches. The business is organised in three business segments. The Oceans segment, The Intelligent Traffic Systems (ITS) and The Product Innovation & Realization (PIR) segment.

All companies and employees in NORBIT share the same vision: To be recognized as world-class, enabling people to explore more.

NORBIT is headquartered in Trondheim, Norway, with manufacturing facilities in Selbu and Røros, Norway and 12 offices and subsidiaries around the world.





TARGETED DEPOT CONTAINERS



- **IMPROVE RECYCLING**

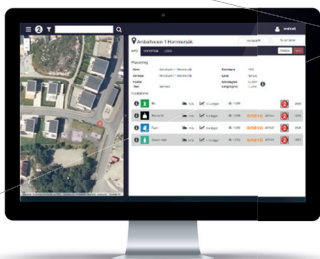
- Incentivise users
- Improve administration monitoring
- Enable “Pay as you throw”

- **OPEN INFRASTRUCTURE**

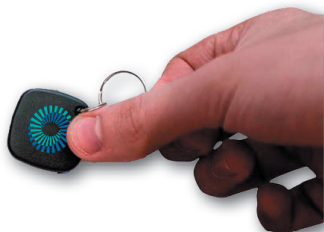
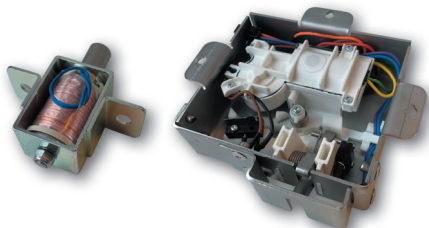
- Integrates with admin systems of choice
- Integrates with 3rd party BLE enabled sensors

- **RESTRICTS UNAUTHORIZED ACCESS**

- Public waste containers
- Private, industrial waste containers
- Protects all waste fractions



SUPPORTS MANAGEMENT PORTALS



SUPPORTS NFC KEYS



SUPPORTS DIGITAL KEYS

ABOUT



- **5G CLOUD CONNECTED**
 - Access Control Management
 - Open web API
 - REST for config. MQTT for events
- **KEYS**
 - Smartphone
 - NFC tags
 - Cloud
- **CONFIGURABLE LOCK INTERFACE**
 - Solenoids
 - Latch solenoids
 - DC motors
 - 3x position switches
- **LARGE COLOR DISPLAY**
 - Remote configurable
- **SENSOR GATEWAY**
 - Open Bluetooth protocol

SPECIFICATIONS

SIZE and WEIGHT

Height: 135 mm

Width: 70 mm

Depth: 20 mm

Weight: 300g

DISPLAY

2,8"

240 x 230 px

262K colors

High brightness

LED backligh

CELLULAR and WIRELESS

NB-IoT NB2, B3,5,8,20

Bluetooth 5,2

NFC ISO18092, ISO14443A,
ISO14443B, ISO15693 and FeliCa™

EXTERNAL CONNECTORS

VCC (02T-JWPF-VSLE-S9 and
Motor/Switches (08T-JWPF-VSLE-S

MOTOR INTERFACE (Lock)

DC and PWM 3,3 V - 15 V VCC (Max 1,5 A)

POWER

3,3 V - 15 V VCC (Minimum 0,5 A)

SENSORS

Temperature, Ambient light,
Three-axis Accelerometer and gyroscope

SIM CARD

Chip SIM (MFF" UICC)

LANGUAGES

Norwegian, English, on request

ENVIRONMENTAL REQUIREMENTS

Operating ambient temperature: -30 °C to 70 °C

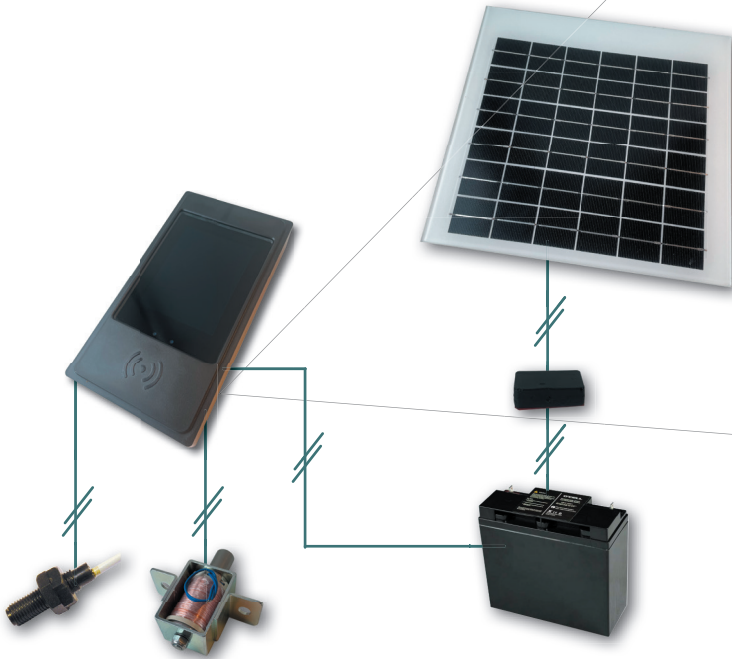
Ingress protection IP67

EN 62262 (kinetic energy) IK08

SUB-VIL CONFIGURATION

SOLENOID & SECONDARY CELL/SOLAR PANEL CONFIG

- Scenario: 1LTE Synk and 15 Unlocks per day
- Estimated lifetime: Over 10 years*
- Solarpanel*: Average production >1,2 mA)
- Battery bank: 12 V e.g. 20 Ah LiFePO or LedAcid

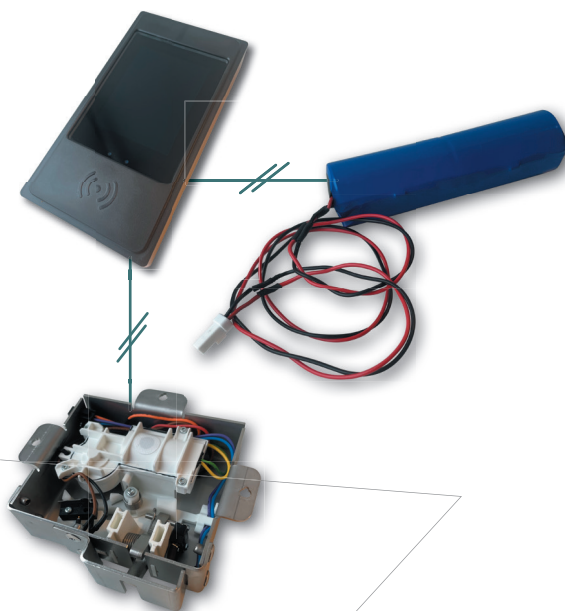


- | | |
|------------------------|--------|
| • Solenoid power usage | 58,8 % |
| • Base power usage | 19,5 % |
| • Display power usage | 17,6 % |
| • NFC power usage | 2,9 % |
| • LTE power usage | 1,2 % |

C-MODEL CONFIGURATION

LOW POWER DC MOTOR & PRIMARY CELL CONFIG

- Scenario: 1LTE Synk and 15 Unlocks per day
- Estimated lifetime: 4,5 years at average 2 °C
- Battery pack: 2x ER34615M (LiSOC12)



- | | |
|------------------------|--------|
| • Base power usage | 41,3 % |
| • Display power usage | 42,9 % |
| • NFC power usage | 7,2 % |
| • DB-Motor power usage | 5,7 % |
| • LTE power usage | 2,9 % |

EU Declaration of Conformity

To whom it may concern:

Herby, Namdal Ressurs AS declares under its sole responsibility that NRC Access [NRC1] is in compliance with the essential requirements relevant provisions of Radio Equipment Directive (RED) 2014/53/EU and Restriction of use of certain hazardous substances (RoHS) Directive. The conformity has been reviewed by Notified Body Nemko AS, Philip Pedersens vei 11, 1366 Lysaker, Norway

Technology

LTE Cat NB1/NB2
Bluetooth low energy
NFC

Product name

NR Access (NRC1)

Hardware release

V 1.0.3 B2 or later

Essential Requirements

Radio Equipment Directive 2014/53/EU

EMC
(Nemko Report No. E21138)

13.56 MHz RFID
(Nemko Report No. 431360-01-R00)

Radiated spurious Emissions
(Nemko Report No. 431360-02-R00)

Standards

EN 301 489-01:V2.2.3
EN 301 489-17:V3.2.4
Draft EN 301 489-52:V2.1.1.2
ETSI EN 300 330 V2.1.1(2017-02)
ETSI EN 300 328 V2.2.2(2019-07)
ETSI EN 301 908-1 V13.1.1 (2019-11)

Name: Rolf Ovesen
Position: CEO
Date of issue: 01/10/21

Signature:





NRC

Namdal Ressurs
Connect